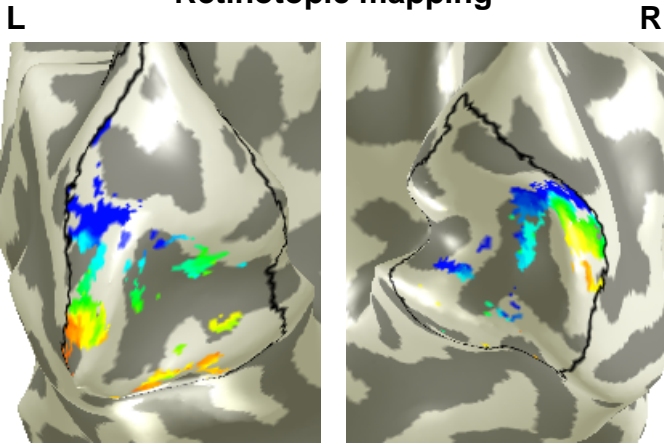


nAMD Patient 6

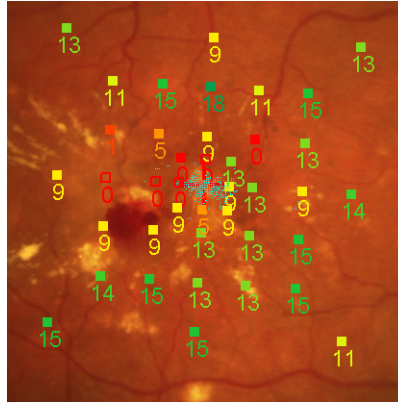
Baseline (BCVA 67 letters)

Retinotopic mapping



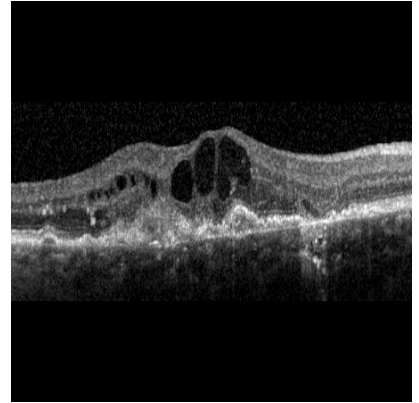
Active V1 voxels = 1585

Microperimetry



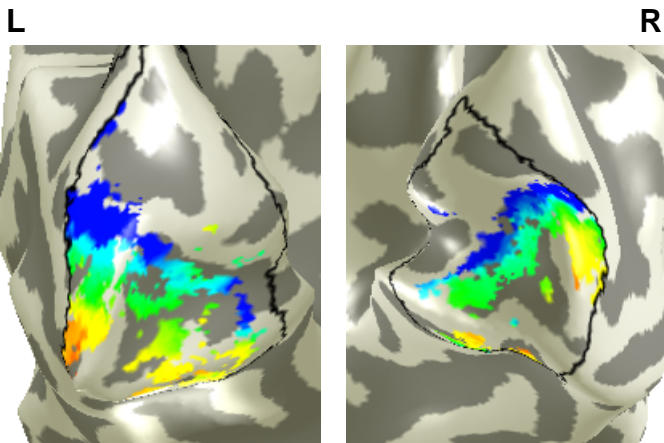
Mean RS = 9.6dB

SD-OCT



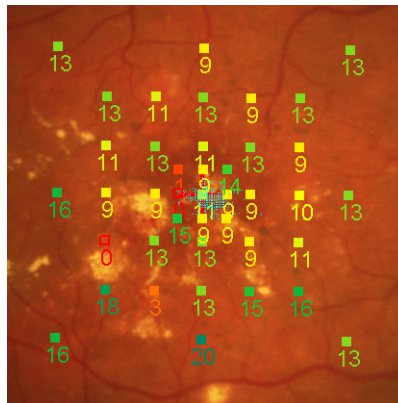
Post Ranibizumab Loading dose (BCVA 85 letters)

Retinotopic mapping



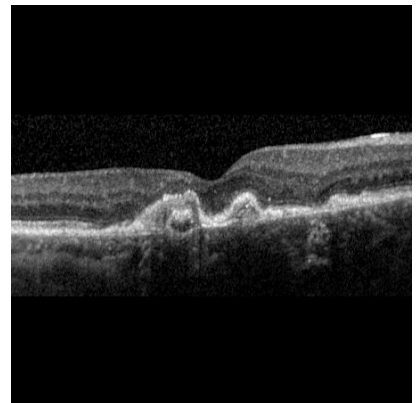
Active V1 voxels = 3448

Microperimetry



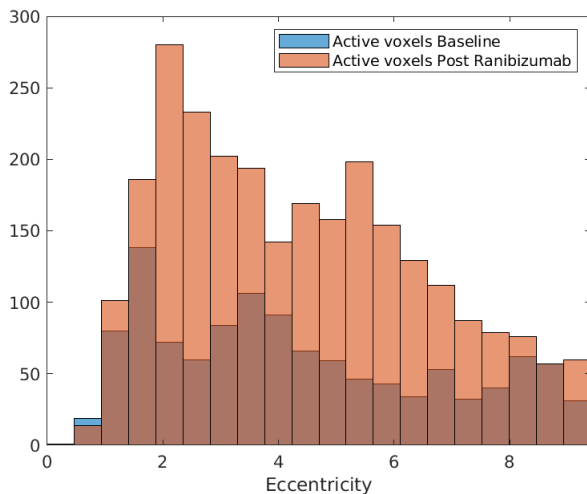
Mean RS = 11.1dB

SD-OCT



Baseline vs Post Ranibizumab Loading dose

V1 voxel histogram



V1 voxel variance explained

